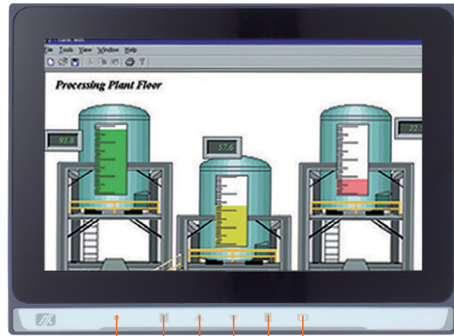
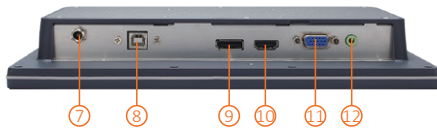


# P6103W-V3

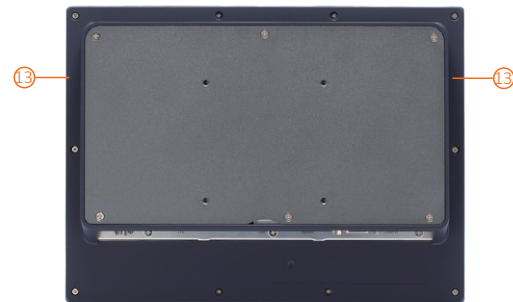
## 10.1" WXGA TFT Widescreen Industrial LCD Monitor



1. Power LED
2. Menu
3. SEL+
4. SEL-
5. Exit
6. Power switch



7. 12 VDC power input
8. USB touch interface
9. DisplayPort
10. HDMI
11. VGA
12. Audio (Line-in)
13. Speaker



▲ Rear view

### Features

- 10.1" WXGA TFT LED backlight LCD
- Projected capacitive multi-touch
- NEMA 4/12 (IP65) compliant flat panel monitor
- Supports panel mount, wall mount, and VESA arm
- Full range screw-type (locked) AC-in
- DP, VGA, and HDMI with multi-signal inputs

### Introduction

The P6103W-V3 is an ultra slim industrial LCD monitor, which adopts 10.1-inch 350 nits WXGA LED backlight LCD display and supports multi-signal interfaces including DisplayPort, VGA, and HDMI. It features NEMA 4/12 and IP65 compliant front bezel, screw-type adaptor plug design. Moreover, the P6103W-V3 supports panel mount, wall mount or VESA FPM PMI (Video Electronics Standards Association Flat Panel Monitor Physical Mounting Interface) mounting. With the compact mechanism design, users can enjoy free from space constraint. It is especially suitable for POI/POS, excellent HMI, and all kinds of heavy-duty industrial fields.

### Specifications

Front Bezel	NEMA 4/12 (IP65)-compliant and metal front bezel	
Mounting	Panel mount, wall mount or VESA arm FPM PMI mounting (video electronics standards association flat panel monitor physical mounting interface)	
LCD Panel	Display	10.1" WXGA TFT LCD
	Max. Resolution	1280 x 800
	Max. Colors	16.7M
	Active Area (mm)	216.96 x 135.60
	Pixel Pitch (mm)	0.1695 x 0.1695
	Response Time	25ms
	Backlight	LED backlight
	Backlight MTBF	30,000 hrs
	Viewing Angle (H/V)	170°/170°
	Contrast Ratio	800 (TYP.)
Brightness (cd/m <sup>2</sup> )	350 nits	

Display Control	OSD (on screen display)
Input Signal	DisplayPort VGA HDMI Touchscreen: USB interface
I/O Connectors	1 x USB for touchscreen version 1 x Audio (Line-in) 1 x VGA 1 x DisplayPort 1 x HDMI 1 x Power input with screw type connector
Audio	2 x Speaker
Power Adapter	AC version: 100 to 240 VAC-DC, 12V3A, 36W power adapter
Power Consumption	12W
Touchscreen	Projected capacitive multi-touch
Dimensions	260.8 mm (10.27") (W) x 38 mm (1.5") (D) x 194.1 mm (7.64") (H)
Packing Dimensions	415 mm (16.33") (W) x 99 mm (3.9") (D) x 313 mm (12.32") (H)
Weight (net/gross)	1.036 kg (2.28 lbs)/1.6 kg(3.53 lbs)
Environment	Operating temperature: 0°C to +50°C (+32°F to +122°F) Relative humidity: 10% to 90% @ +40°C, non-condensing
Certifications	CE, EN 61000-6-2, EN 61000-6-4, and FCC Class A

## Ordering Information

P6103WPC-AC-U-V3 (P/N: E226103105)	10.1" industrial monitor with capacitive touch screen and AC version
---------------------------------------	--

\*Other configuration by request

\*Specification and certifications may vary based on different requirements

## Packing List

1 x P6103W-V3 unit  
1 x VGA cable  
1 x USB cable for touch  
1 x Audio cable  
1 x Adapter (AC version only)

## Optional Accessories

590000012700	HDMI cable
590000020900	DisplayPort cable 2M
82251030100E	Panel mount kit
82238460050E	Wall mount kit
E226171119	Desktop stand

## Dimensions

