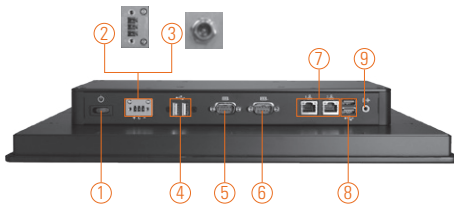
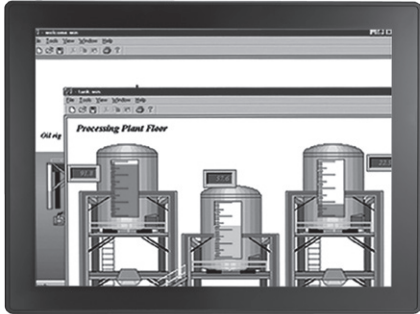


GOT3177T-834

17" SXGA TFT Flat Front Bezel Touch Panel Computer with Intel® Celeron® Processor J1900 (-10°C ~ +50°C)



- | | | |
|---|---------------------------|---------------------------|
| 1. Power switch | 5. COM 1 (RS-232/422/485) | 10. CFast™ slot |
| 2. Terminal block for DC power input or | 6. COM 2 (RS-232/422/485) | 11. Backlight switch |
| 3. Screw conn. w/ AC power adapter | 7. Ethernet x 2 | 12. Brightness adjustment |
| 4. USB 2.0 x 2 | 8. USB 3.0 x 2 | |
| | 9. Audio (Line-out) | |



Introduction

The GOT3177T-834 adopts a 17-inch SXGA LCD and supports Intel® Bay Trail-D processor. By supporting a wide range operating temperature from -10°C to +50°C, it can be used in harsh environment. The rugged industrial panel PC supports low power Intel® Celeron® processor J1900. It also provides two PCIe mini card slots for 3G, wireless network connectivity. The 17" flat front bezel touch panel computer is suitable for transportation, heavy-duty industry, smart factory automation, and oil pipe monitoring systems.

Wide Temperature Range Support

The Intel® Bay Trail-based GOT3177T-834 applies unique extended temperature technology with wide temperature range support as well as fanless operation. It also has a compact design for harsh environment.

WLAN Antenna Support (optional)

The 17" SXGA IP65 industrial panel PC, GOT3177T-834, provides two PCIe mini card slots and WLAN/3G antennas for wireless network connectivity.

Features

- 17" SXGA TFT flat resistive touch with modulated design
- Fanless design with Intel® Bay Trail-D Celeron® processor J1900 (up to 2.42 GHz)
- Supports 2.5" SATA HDD & CFast™ or mSATA
- Supports WLAN/3G module & antenna (optional)
- Supports 2 Gigabit LAN, 2 USB 2.0, 2 USB 3.0 and 2 COM ports
- IP65 front bezel
- Supports panel mount and optional VESA arm/desktop stand/wall mount
- Supports wide temperature range of -10°C ~ +50°C



▲ Modular design



▲ Rear view



Specifications

Front Bezel	IP65 front bezel	
LCD Panel	Display Type	17" SXGA TFT LCD
	Brightness (cd/m ²)	350 nits
	Resolution	1280 x 1024
Main System	CPU	Intel® Bay Trail-D Celeron® processor J1900 4C @2.0 GHz (up to 2.42 GHz)
	Chipset	SoC Intergrated
	System Memory	1 x 204-pin DDR3L-1333/1600 SO-DIMM up to 8 GB
	BIOS	AMI UEFI BIOS
	Storage	1 x 2.5" SATA HDD 1 x CFast™ or 1 x mSATA
	Watchdog Timer	255 levels, 0 ~ 255 sec.
	Onboard Graphics	Integrated Intel® HD Graphics



Specifications

I/O Connector	2 x RS-232/422/485 (default RS-232) 1 x Audio (Line-out) 2 x USB 2.0 2 x USB 3.0 2 x 10/100/1000Mbps Ethernet (Intel® i210IT)
Expansion Interface	1 x PCIe Mini Card slot (with SIM slot, full size) 1 x PCIe Mini Card slot (supports mSATA optional, full size)
Touchscreen	Flat resistive touch
Power Supply	1. DC version : 9-36VDC 2. AC version : 12VDC w/adapter
Dimensions	398.02 mm (15.64") (W) x 59.9 mm (2.36") (D) x 330.44 mm (13.01") (H)
Packing Dimensions	510 mm (20.08") (W) x 190 mm (7.48") (D) x 540 mm (21.26") (H)
Weight (net/gross)	4.8 kg (10.6 lb)/7.1 kg (15.67 lb)
Environment	Operating temperature: -10°C ~ +50°C (+14°F ~ +122°F) Storage Temperature: -20°C ~ +60°C (-4°F ~ +140°F) Relative humidity: 20% ~ 90% @ 40°C; non-condensing Operation vibration: 2G, 10 ~ 500Hz, random for CFast™
Certificate	CE

Ordering Information

GOT3177T-834-FR-DC	17" SXGA TFT fanless touch panel computer with Intel® Celeron® J1900 2.0 GHz (up to 2.42 GHz) quad core processor, 5-wire flat resistive touch screen and 9-36VDC terminal block connector
GOT3177T-834-FR-J	17" SXGA TFT fanless touch panel computer with Intel® Celeron® J1900 2.0 GHz (up to 2.42 GHz) quad core processor, 5-wire flat resistive touch screen and AC-DC 12V power adapter (screw type connector)

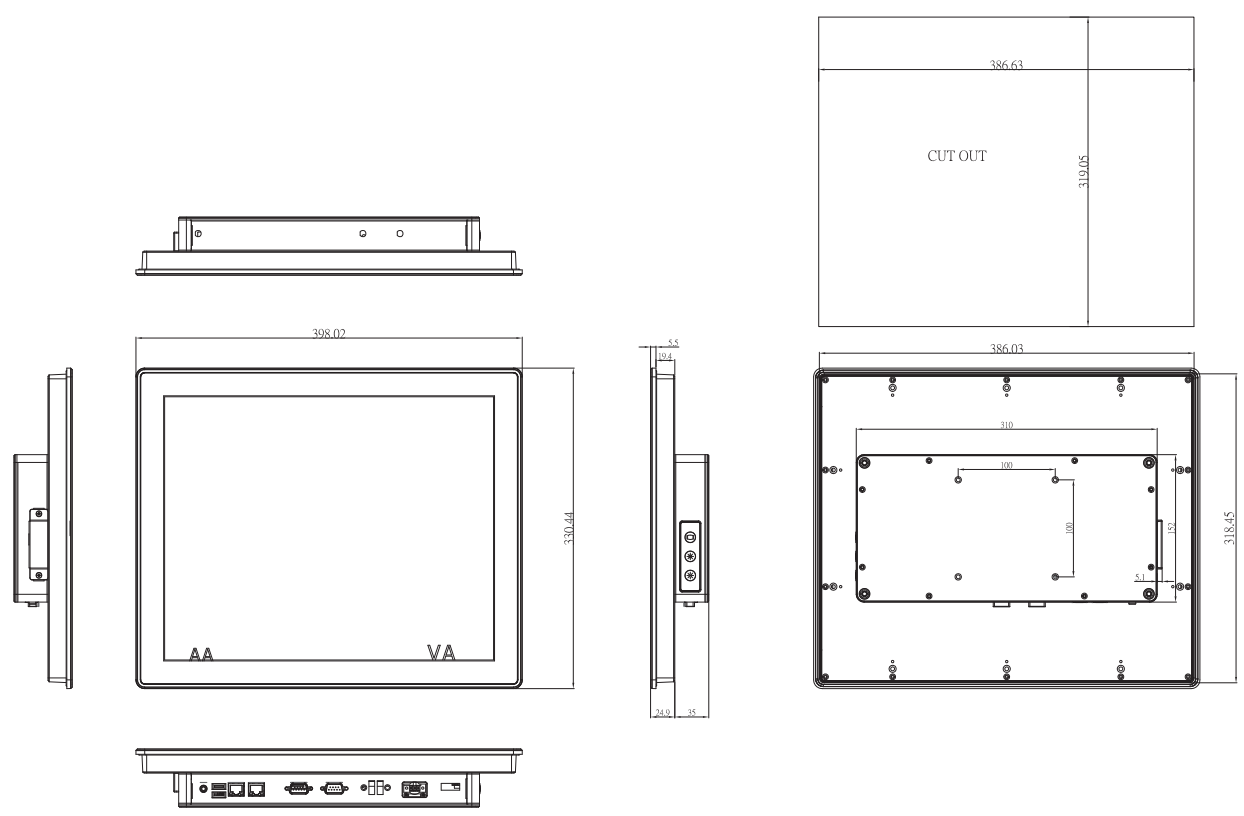
Optional EOS Installation

WES 7
WEBS

Optional OS Installation

Windows® 8.1
Windows® 7

Dimensions



Overview

Fanless Touch Panel Computers

2

Heavy-duty Fanless Touch Panel Computers

Industrial Touch Panel Computers

Industrial Touch panel Monitors

Infotainment Touch Panel Computers

Healthcare & Medical Solutions

Open Frame Panel Computers

Accessories

* All specifications and photos are subject to change without notice.

